



# CARBON X LOUPES

Designed for neck and shoulder relief

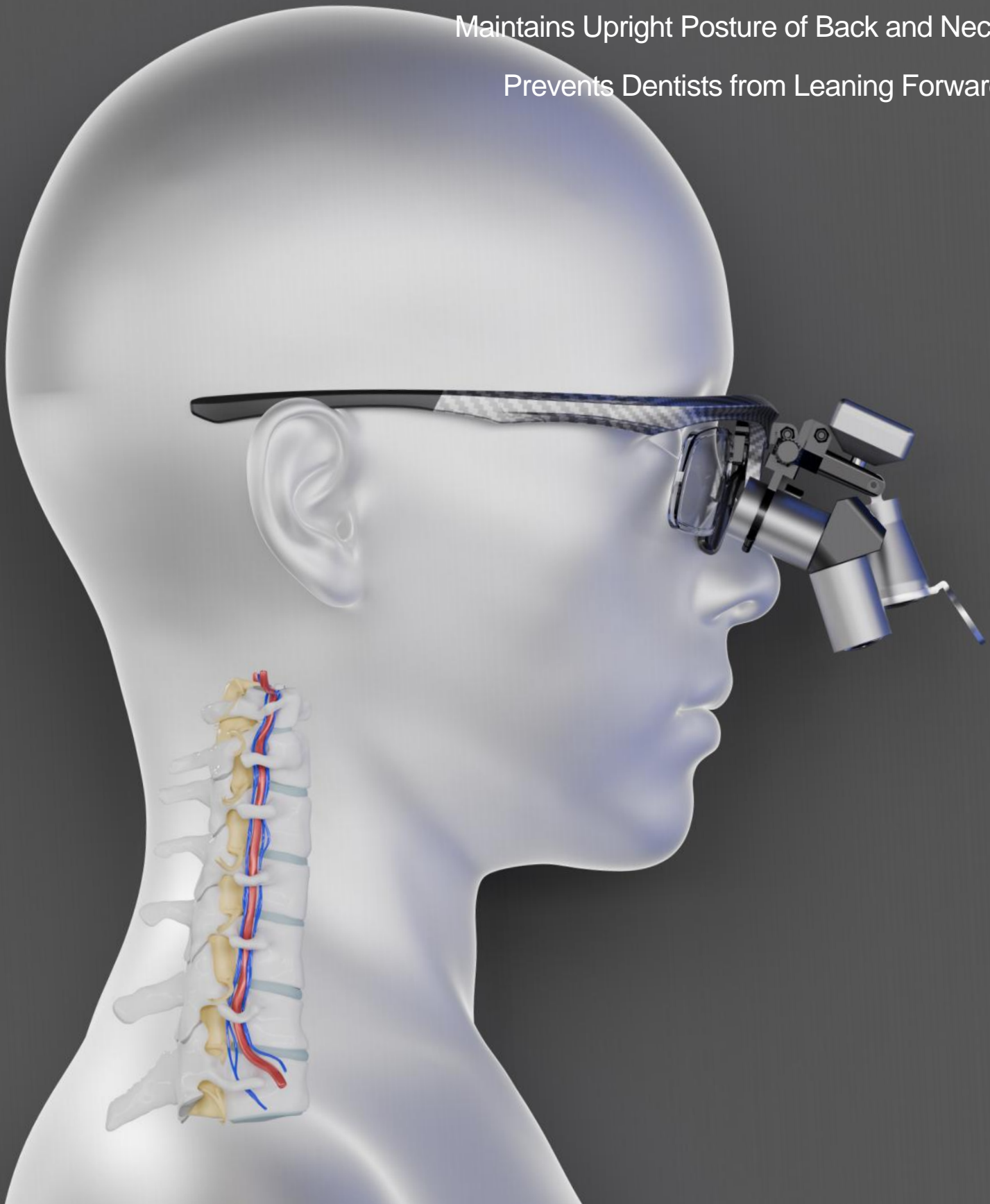
# Ergonomic Design

48-Degree Optical Design

48-Degree Downward Angle

Maintains Upright Posture of Back and Neck

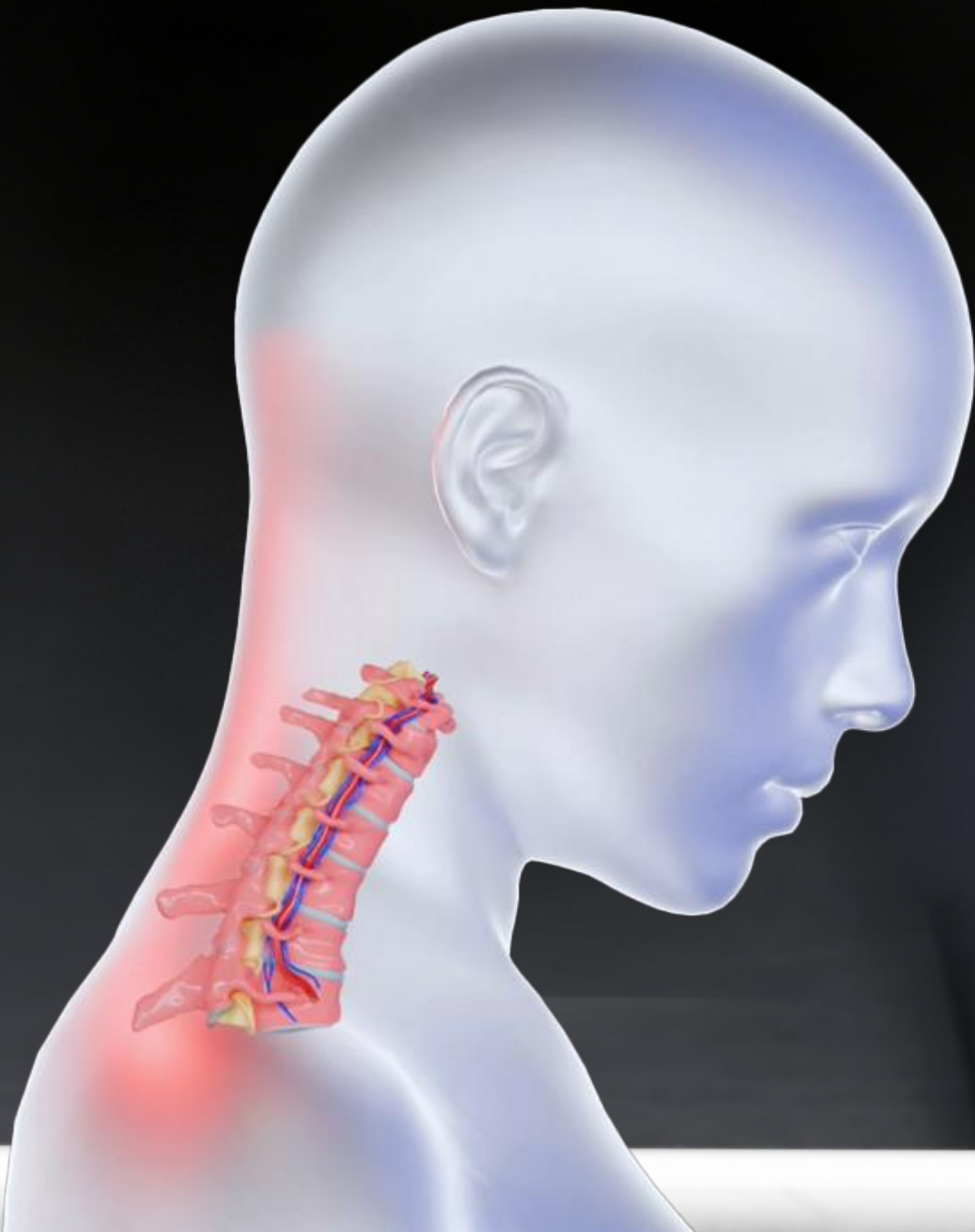
Prevents Dentists from Leaning Forward



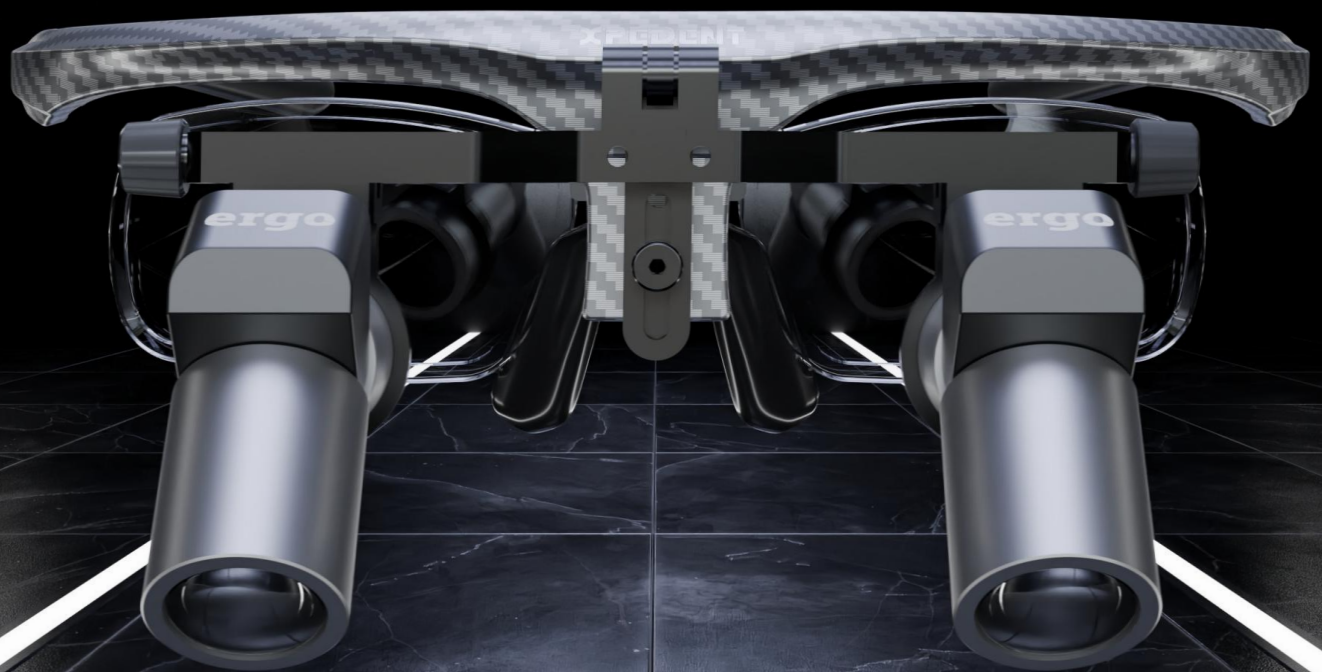
# Removes the need to bend over

Reduces Shoulder and Neck Strain

Extends Professional Career







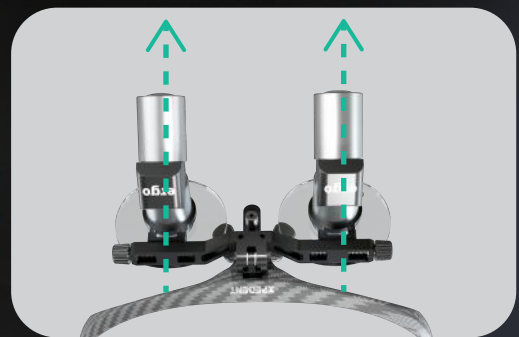
# No Customisation Needed Freely Adjustable

3.5X Magnification, with a Field of View up to 90mm  
Easily Observe Every Detail in the Oral Cavity



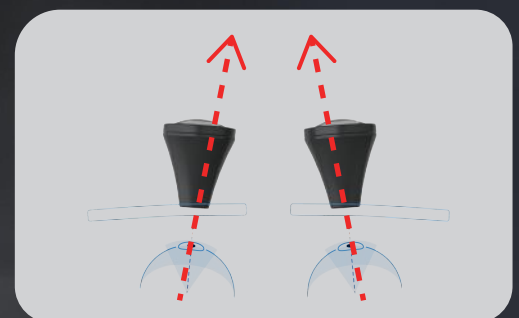
# Independent Adjustment of Left and Right Interpupillary Distance Easy Image Alignment

Reduces Eye Fatigue from Long Surgeries



## Parallel field of vision:

Helps alleviate tension in the medialrectus muscles of the eyes

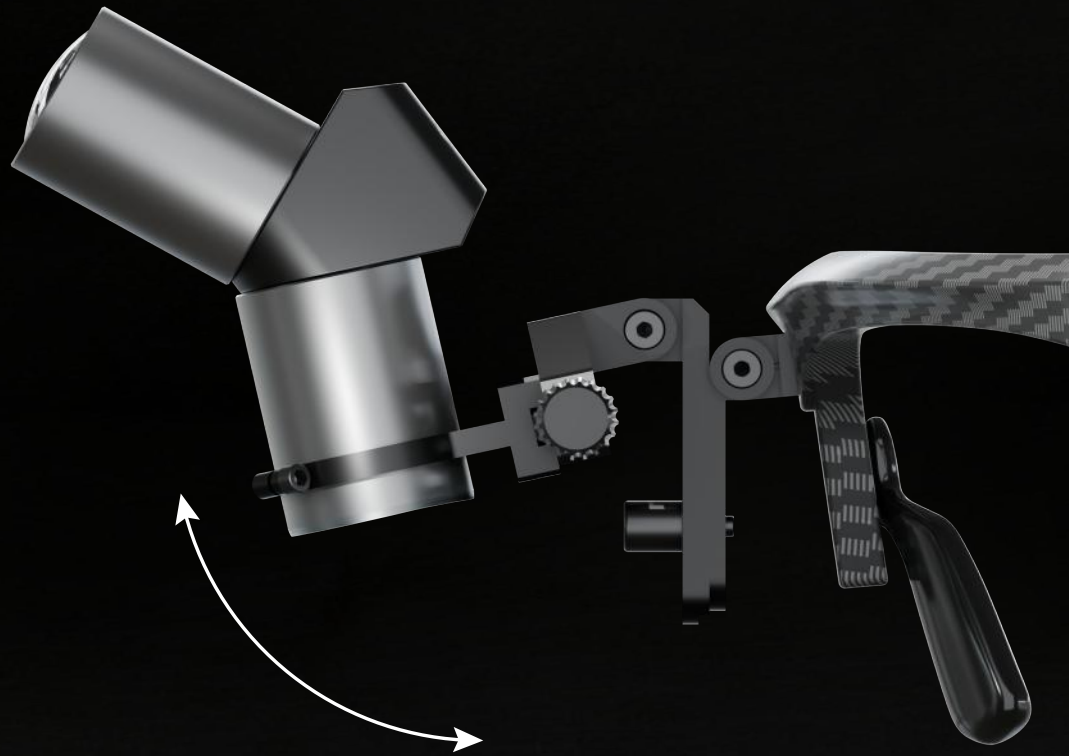


## Eye convergence:

Leads to tension in the medialrectus muscles of the eyes

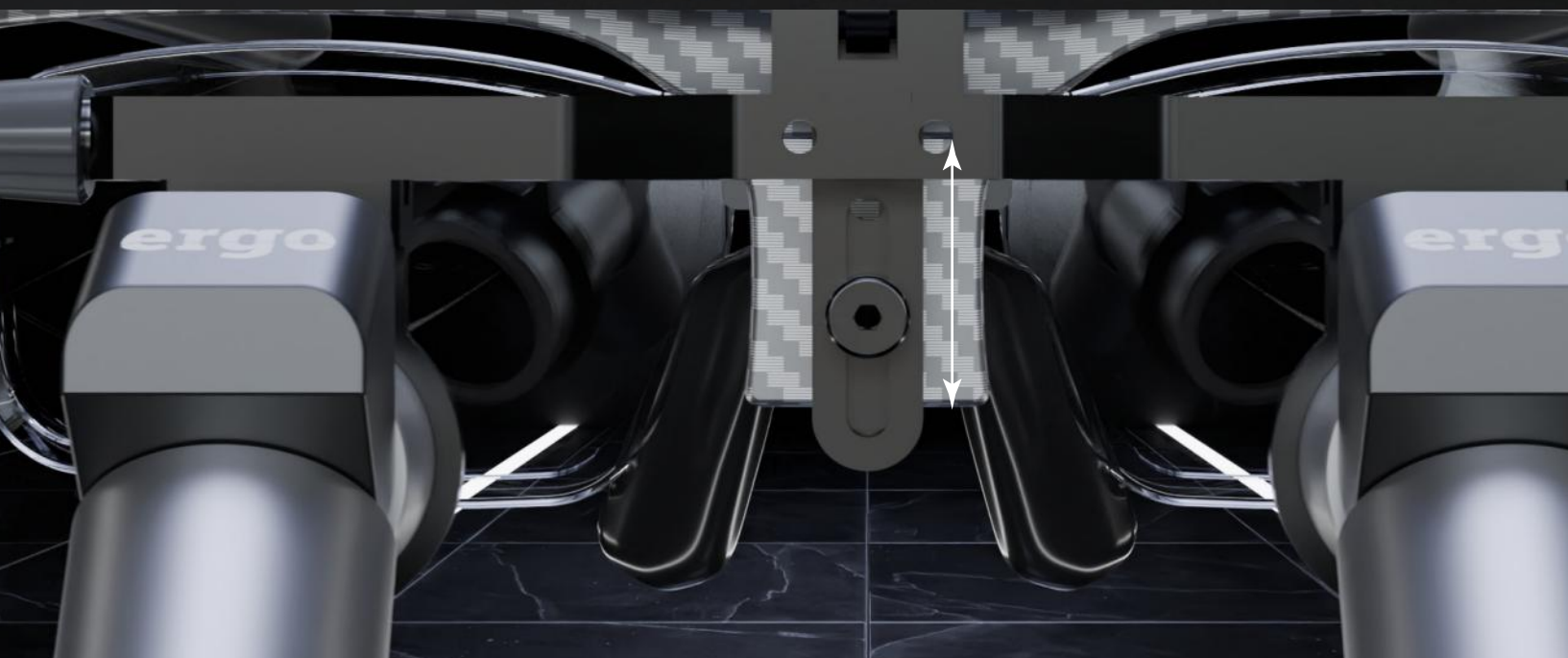
## Easy Flip-Up for Unobstructed View

Improved Doctor-Patient Communication



## Adjustable Pupil Height

Ensures a Shadow-Free View







# Soft Silicone Nose Pads for Comfort

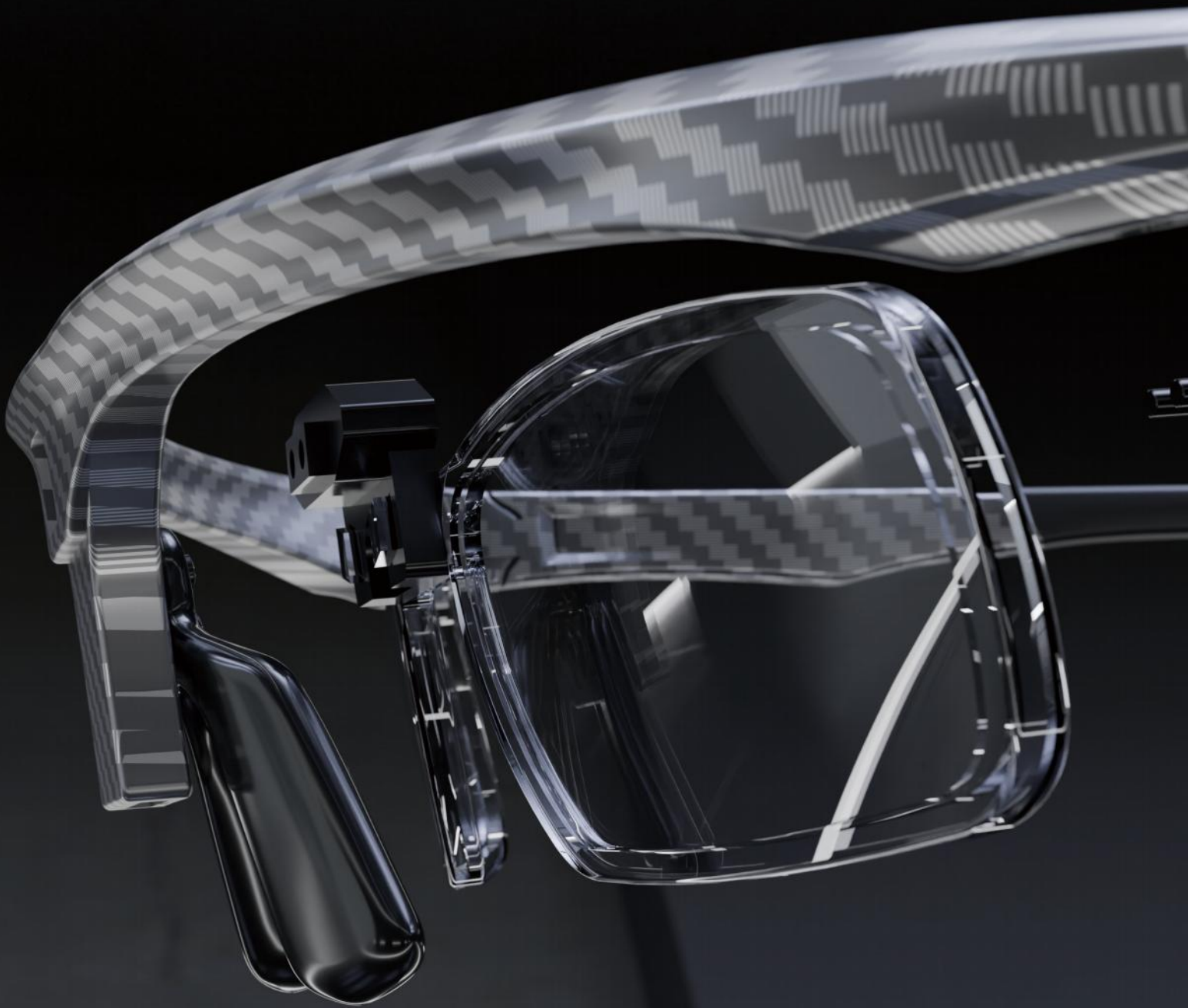
Embedded Bendable Metal Strip for Easy Adjustment and Snug  
Fit on the Bridge of the Nose

# The lenses use SCHOTT glass with anti-fog and anti-mold coating technology

Clear vision with sharp edges







# Easy Installation of Prescription Lenses

Quick and Reliable Clip-On Fixation



# Headlight Mount Available

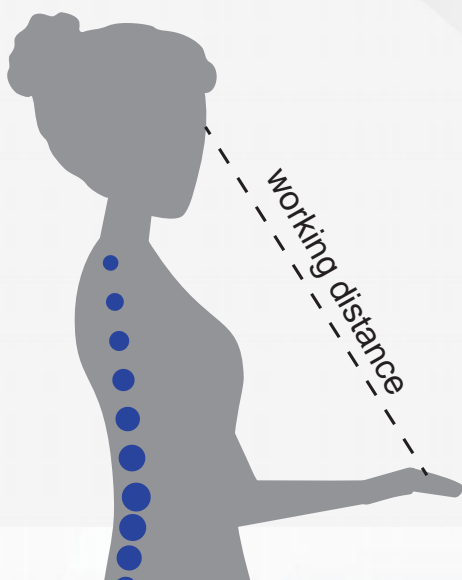
Optional Wired or Wireless Headlight





Model	Magnification	Working Distance	Pupillary Distance Adjustment	Depth Of Field	Field Of View	Weight
X3.5	3.5X	280-380mm	50-80mm	100mm	70-90mm	75g
X4.5	4.5X	360-460mm		100mm	50-80mm	80g
X5.5	5.5X	440-540mm		90mm	50-75mm	88g
X6.5	6.5X	500-600mm		80mm	45-70mm	87g

### Recommended Working Distances for Magnifying Glasses at Different Heights



Height(cm)	Recommended Working Distance(mm)
150-155	350
155-165	400
165-175	450
175-185	500
>185	550

Recommended working distances may vary and are for reference only.



# FireFly

Cordless Headlight

## Parameters

Intensity	55K LUX / 35K LUX		
Weight	27 g		
Run Time	2 hrs		
Charge Time	1.25hrs		
Batteries	3 pcs		
Colour Temperature	5,750K		
Yellow filter	External		
Colour	35K LUX	Silver	
	55K LUX	 Blue	 Gold  Dark grey





# FlexiLight

## Wired Headlamp

### Bright & Natural LED Lighting

5000K colour temperature for daylight-like illumination

### Adjustable Lamp Head

Customizable angle for precise lighting

### Lightweight & Portable

Compact design with neck-hanging power system

### 5-Level Brightness Control

Easy adjustment for different lighting needs

### Long Battery Life

Up to 6 hours of continuous use

### Quick Charging

Fully charges in approximately 4 hours

### Durable & Reliable

Supports 500+ charge cycles



### Basic parameters

Input Power: 90V - 250V AC, 50Hz - 60Hz

Colour Temperature: 5000K  $\pm$  500K (daylight colour)

Battery Life: Approximately 6 hours

Charging Time: Approximately 4 hours



### Follow up



xpedent\_international



Xpedent International



Xpedent



international xpedent

**[www.xpedent-intl.com](http://www.xpedent-intl.com)**



#### **Xpedent Registered Office**

##### **Xpedent UK Ltd**

88 Boundary Road,  
Hove, East Sussex,  
BN3 7GA  
England 06128867



#### **Sales Office**

##### **Xpedent Austria GmbH**

Millennium Park 9  
6890 Lustenau  
Austria



#### **Manufacturer**

##### **Guilin Yikeshi Medical Instrument Co., Ltd**

D08 Building, High Tech  
Industrial Park, Chaoyang  
Road Qixing District Guilin,  
541004 China