

MotoSync MiNi[®]

2 in 1

Brushless Endo Motor



World's **smallest cordless**
endo motor with an
integrated apex locator



Compact Size Mighty Performance

108_g

Precision in the palm of your hand: elevate your endodontic experience today

This compact and lightweight design offers users portability and convenience, facilitating easier carrying and usage



Flexible Placement

Can be placed horizontally or vertically,
allowing users to place it as they please

Enhances the product's practicality

enabling users to use it more freely and
comfortably



Efficient Root Canal Preparation

Powerful brushless motor

Ultra-mini 6:1 contra-angle handpiece

Motor life is ten times that of a brushed DC motor

Smooth rotation ultra-quiet





2 in 1 Endo Motor

With built-in Apex locator

Accurate preparation

Measuring and expanding simultaneously

More efficient root canal preparation

MotoSync MiNi[®]



High-performance Brushless Motor

Brushless motor life is ten times Brushed motor life

Low wear Low heat Longer lifespan

Strong power and quick response

Enhancing root canal treatment efficiency

Intelligent System

Automatic start and stop
Automatic reverse or stop
Automatic deceleration
Ensure safe and efficient
root canal treatment



***Brushless
Endo Motor***

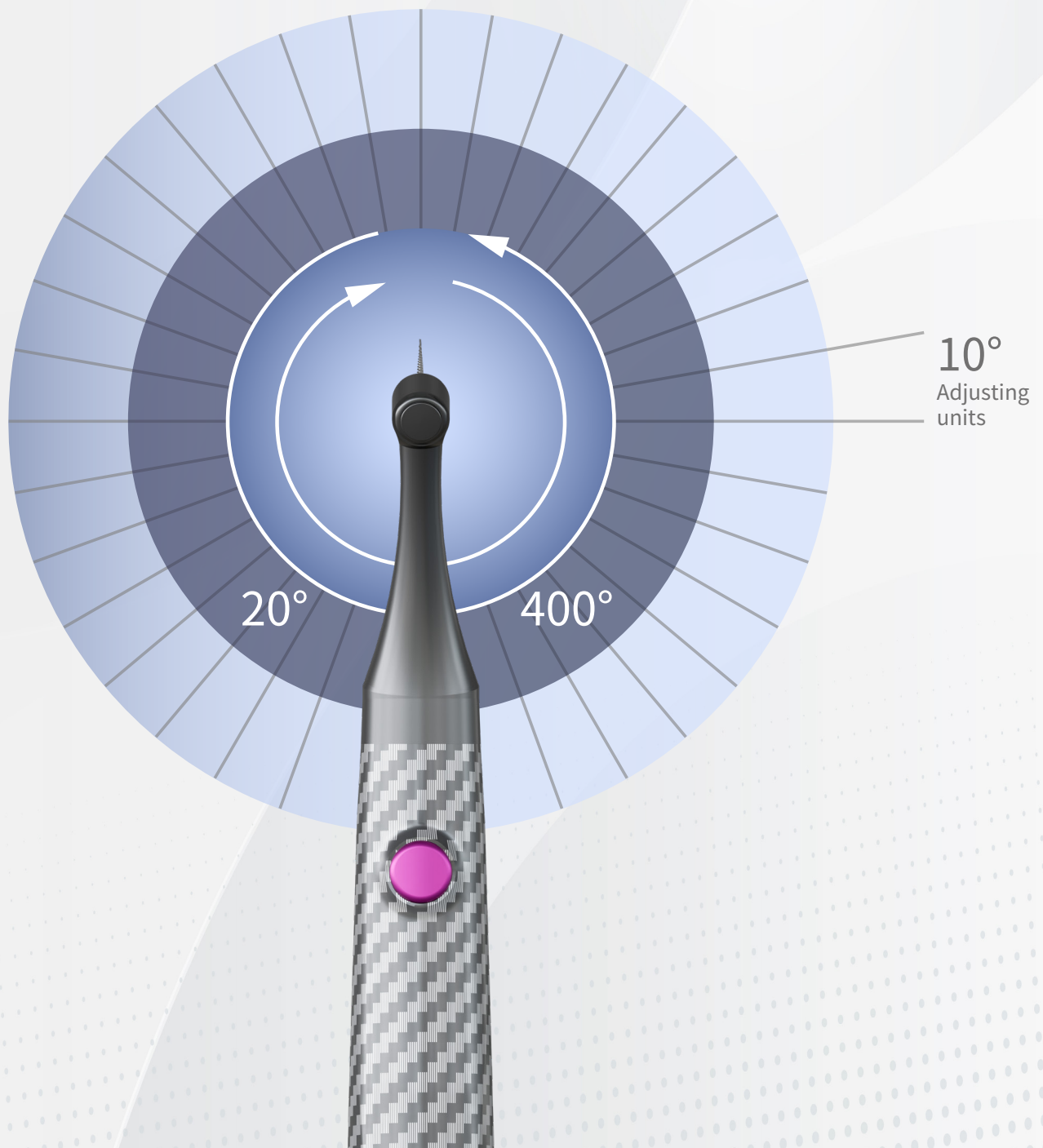
MotoSync Mini®

Precise Adjustment

Adjustment range of forward and reverse rotation angles 20° to 400°

Precise rotation angles reduce the risk of instrument separation increasing preparation efficiency

Adjustable reciprocating rotation angle 10°





***Brushless
Endo Motor***

6:1 Ultra-mini Contra-angle Handpiece

Smaller size

Clearer treatment visibility

12.5% reduction in head diameter size

18% reduction in head height size

More flexible operation

Clearer treatment visibility

Stable output

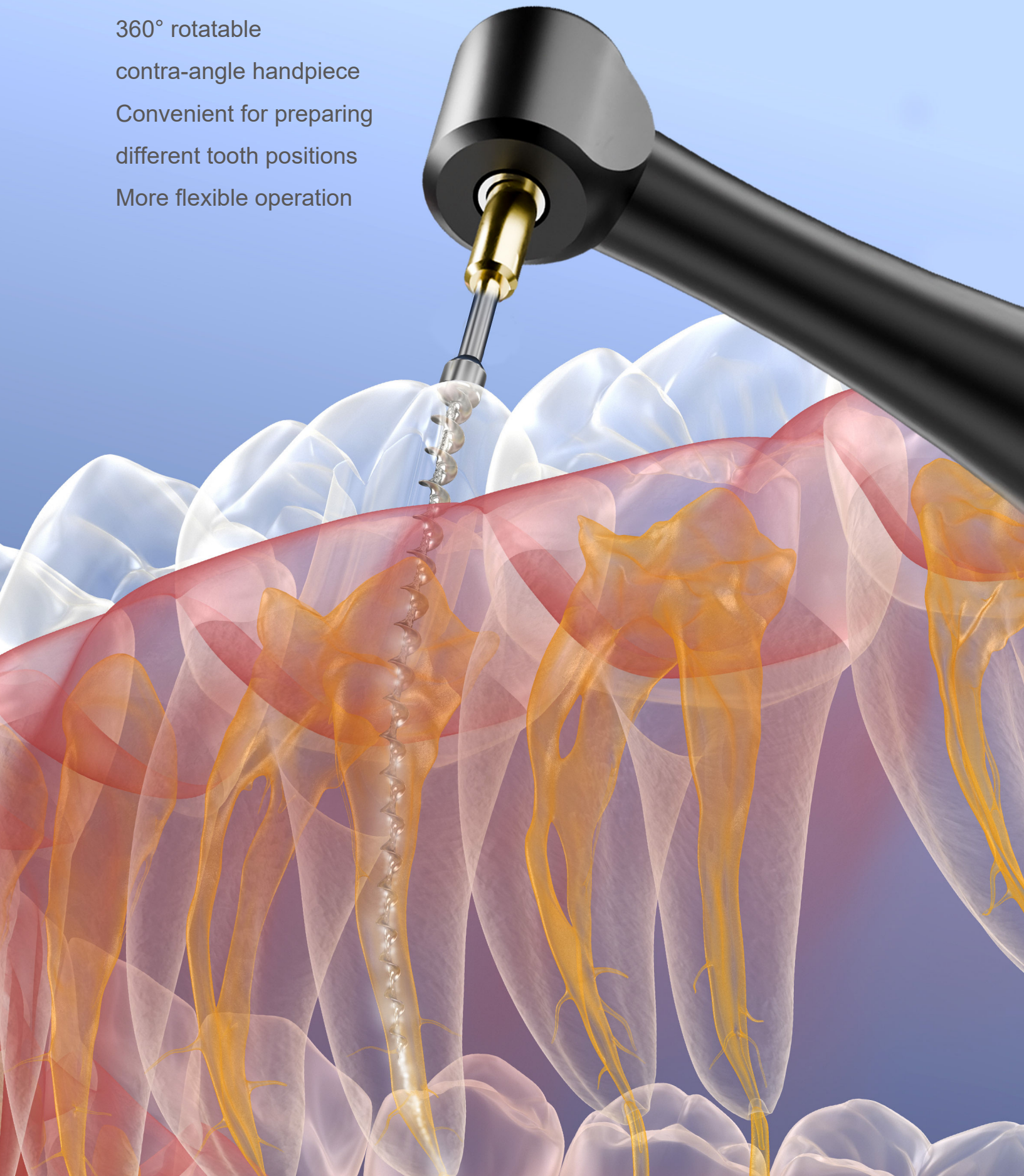
Optimised Design

360° rotatable

contra-angle handpiece

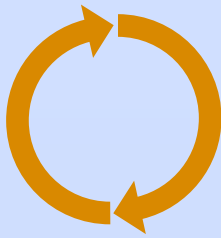
Convenient for preparing
different tooth positions

More flexible operation



The innovative Torque Adaptation Technology (TAT)

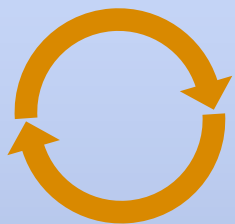
Combines the best aspects of both rotating and cyclical-reciprocating technologies



Continuous rotation



Reversing by 90° when the
set torque is exceeded



Reversing by 90° when the
set torque is exceeded



It allows for continuous rotation of the motor, ensuring efficient advancement, as long as the pre-set torque limit isn't surpassed. If the file's pressure consistently exceeds the predetermined torque during a half-turn (180°), Torque Reverse is triggered, causing the file to rotate backwards by 90°. This action helps free the instrument. Following this, the file resumes rotation in the original cutting direction.

Unveiling Precision Path Technology (PPT)

PPT's Role in Minimising File Breakage

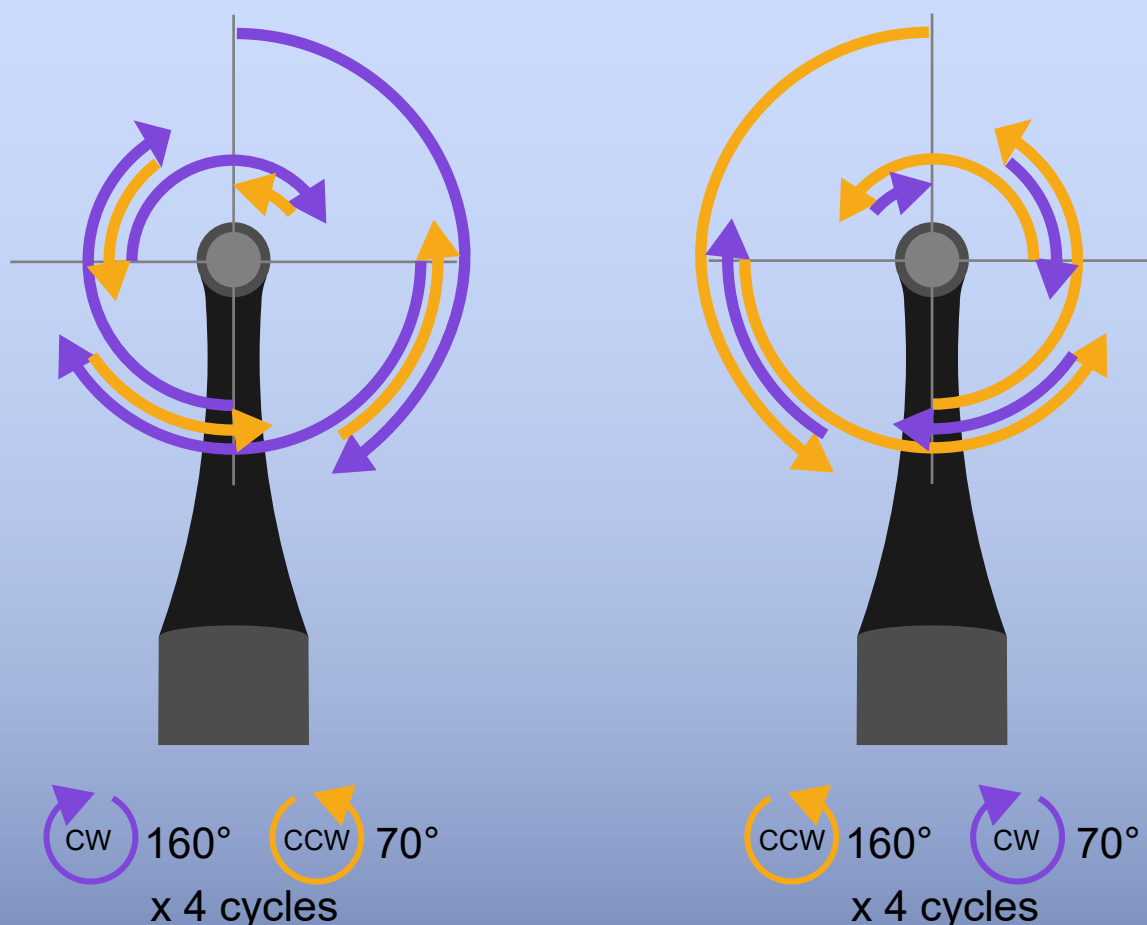
PPT significantly lowers the risk of file fractures with its innovative reciprocating action. Achieving patency with a #10 scout file becomes feasible. The challenging task of patency through manual filing is now accomplishable with an endo motor!

Preserving Root Canal Anatomy

PPT enables treatments that retain the natural shape of the root canal, even in situations involving curved or narrow canals.

Rotational Dynamics

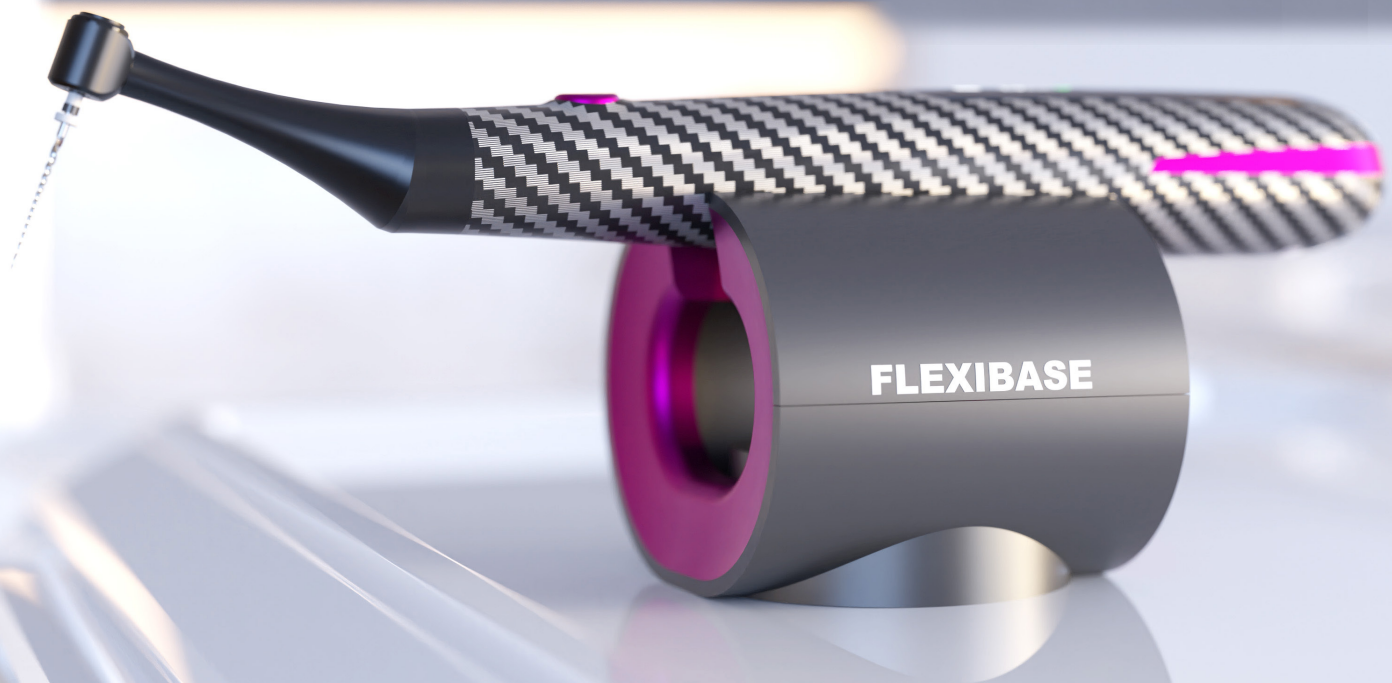
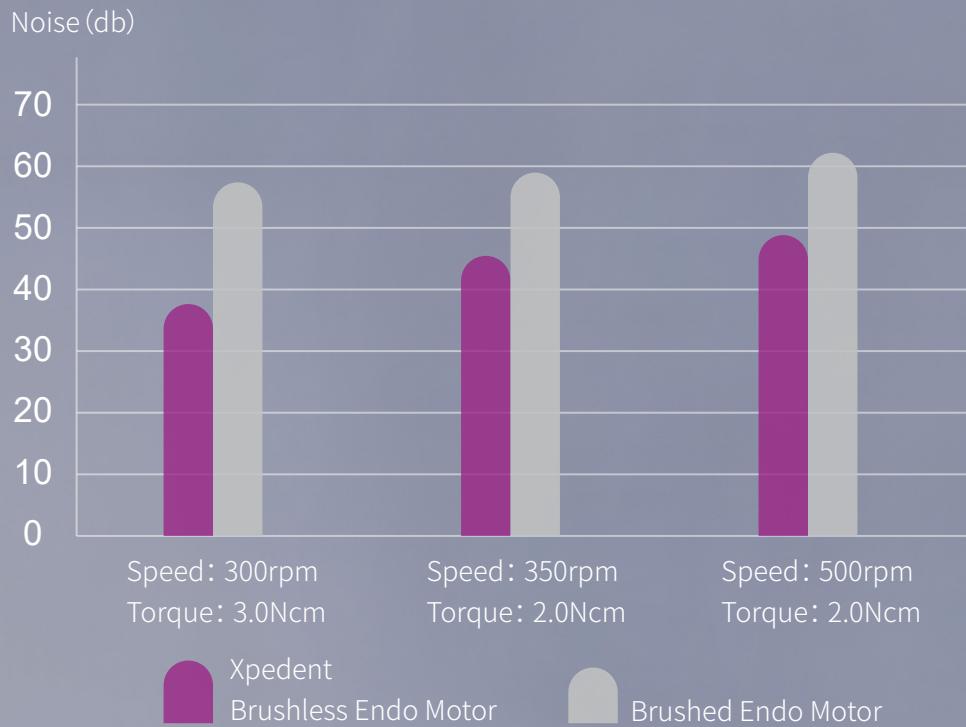
Its smart motion lessens the likelihood of file jamming and aids in preventing file breakage within the canal when jamming does occur.



Comfortable Experience

Smoother Lower Noise Less Vibration

More comfortable for the patient during treatment



Wireless Handpiece

Free from the constraints of trailing wires



Parameter

Screen

TFT color screen

Torque

0.4~5.0N.CM

Speed

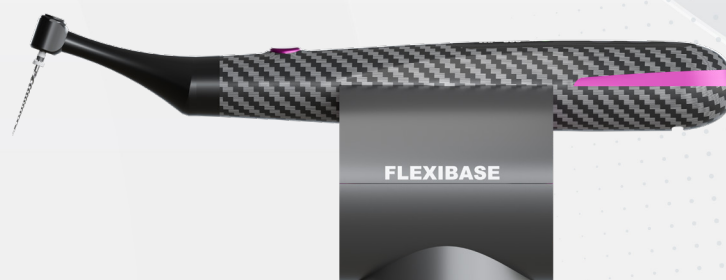
50rpm~2500rpm

Battery
capacity

1000mAh

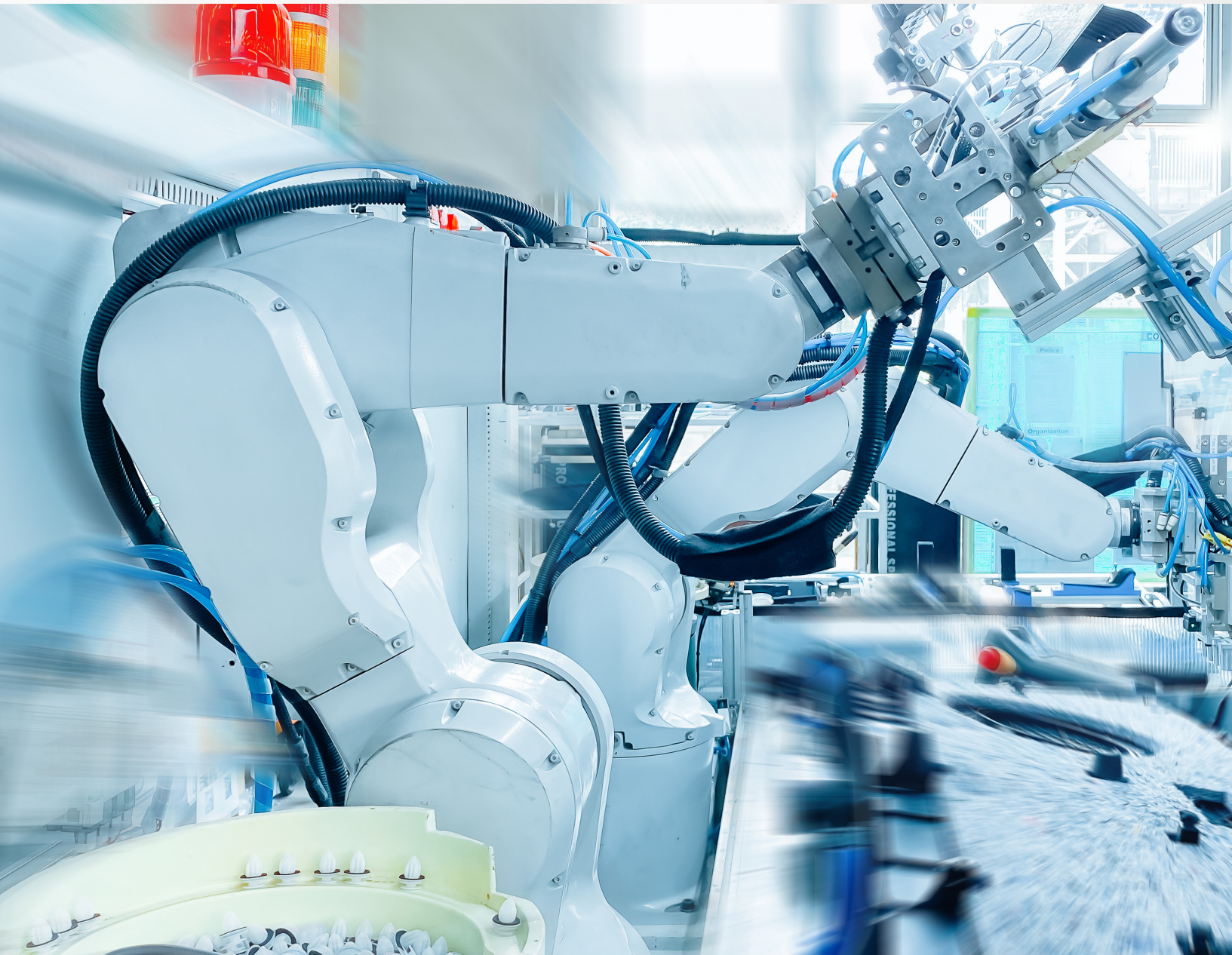
Weight

108g



Advanced Manufacturing Technology

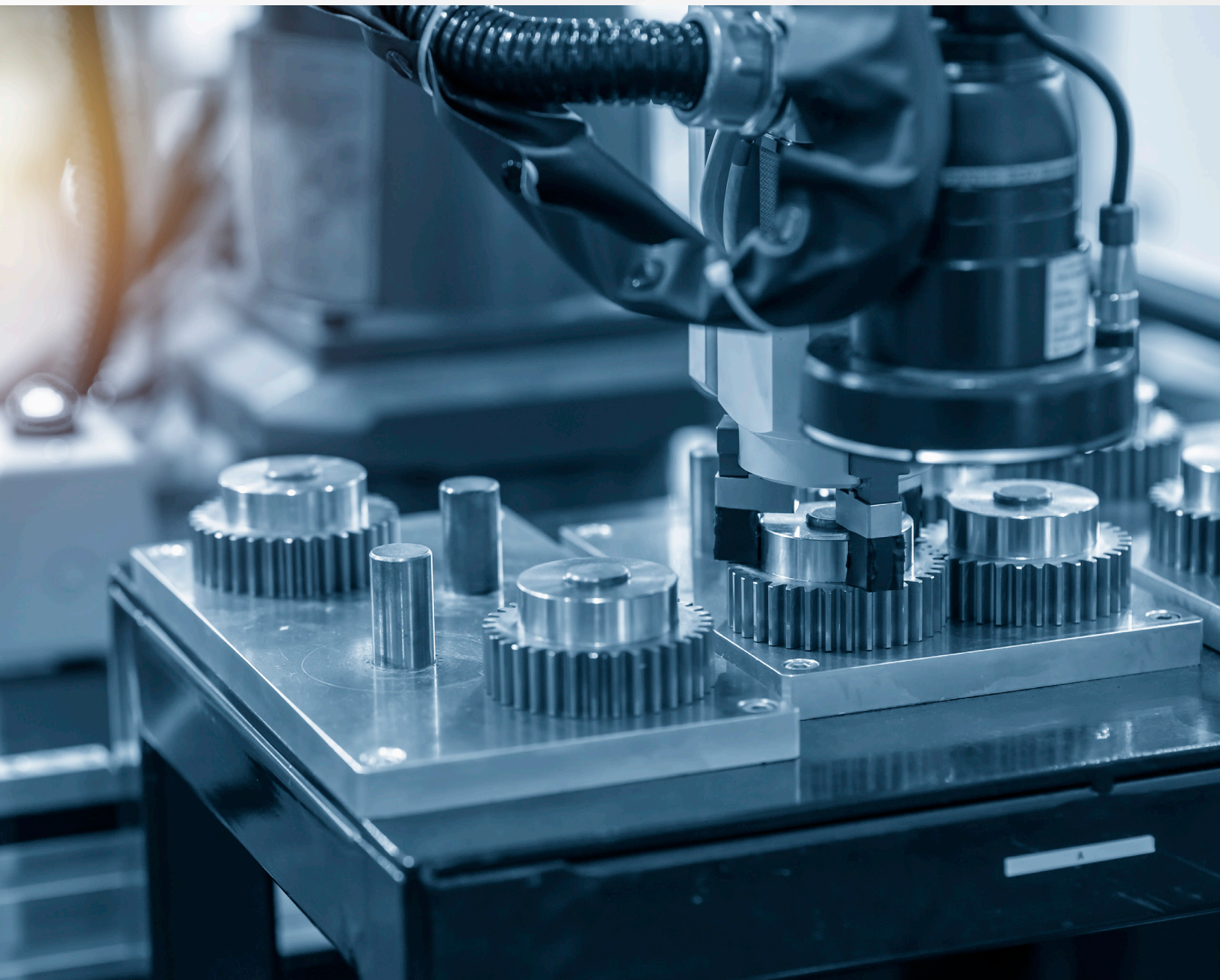
Using our precision Japanese five and seven-axis Swiss-style CNC technology along with more than 20 years of experience in precision machining, we are committed to perfection in every detail ensuring that products achieve excellent quality.



Precision Manufacturing

The tolerance of machined parts is 0.005mm achieving the limits of precision machining.

Achieving this precision is the result of years of honing our skills along with continuous technological innovation.





Follow up



xpedent_uk



Xpedent International



Xpedent



jenny@xpedent.com

www.xpedent.com

info@xpedent.com



Xpedent Head Office

Xpedent UK Ltd

88 Boundary Road,
Hove, East Sussex,
BN3 7GA
England 06128867



Sales Office

Xpedent Austria GmbH

Millennium Park 9
6890 Lustenau
Austria



Manufacturer

Guilin Yikeshi Medical Instrument Co., Ltd

D08 Building, High Tech
Industrial Park, Chaoyang
Road Qixing District Guilin,
541004 China

Compact Size
Mighty Performance

Precision in the palm of your hand: elevate your
endodontic experience today

This compact and lightweight design offers
users portability and convenience, facilitating
easier carrying and usage