

Carbon X Series

Premium Products Range



Oraloptix Prime[®] Surgical Microscope

*With 4K built-in system
Continuous lens*

- German Lenses
- To see a small beginning

4K Camera System



- Built -in 4K high-definition image output
- 4K functions: integrated image module, rotating ring, extender, and duster
- HDMI signal output to the display
- With a USB interface, connection to the wireless mouse and USB flash drive. The photos and videos taken can be stored in the U disk

Microscope Master Chair



20 colour options



TTL ERGO Loupe

Customised



Improve Your Posture
Enhance Your Well-Being
Visual Acuity and Ergonomics

Designed to maximize ergonomic efficiency for dental professionals, enhancing workplace productivity. Includes integration of current prescriptions and customization options to express personal style

Magnification	Working Distance	Depth of Field	Field of View	Weight
3.5X	280-380mm	100mm	70-90mm	54g
4.5X	360-460mm	100mm	50-80mm	58g
5.5X	440-540mm	90mm	50-75mm	64g
6.5X	500-600mm	80mm	45-70mm	61g

Dental Loupes

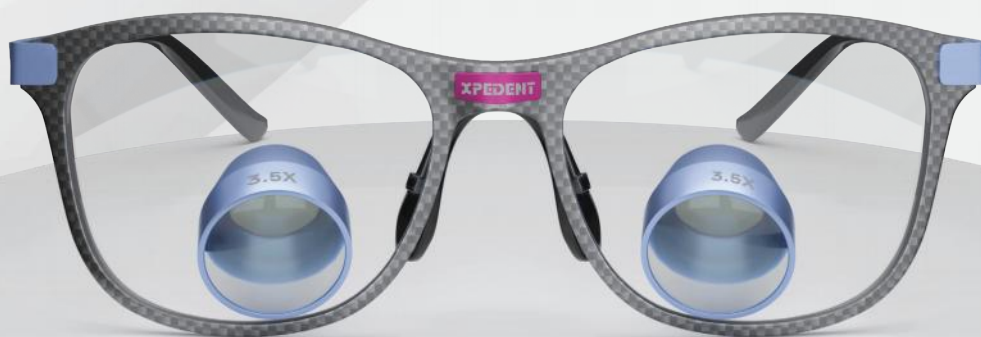
Custom Design

Custom Design, Artisan Craftsmanship

- Xpedent is dedicated to providing exceptional loupe solutions for dental professionals. Featuring High-Definition Lenses, a Robust Frame, and Precision Coatings
- Utilising the latest technology, we minimise chromatic aberration and spherical distortion, ensuring unmatched clarity
- Our loupes are crafted with hardened alloys to prevent deformation, maintaining stability and durability for long-term use
- Featuring scratch-resistant, anti-fog, and anti-glare technologies, our loupes' enhanced lens durability maintains clear vision over time

Magnification	Working Distance	Depth of Field	Field of View	Weight
2.5X	300-700mm	200mm	150-170mm	43g
3.0X			130-150mm	46g
3.5X			110-130mm	47g

Customised



Carbon X Loupes

Adjustable Pupillary Distance
Angle Magnifier



- 4 sizes are available 3.5 / 4.5 / 5.5 / 6.5
- Xpedent Carbon X loupe combine Schott Glass and Achromatic Optical Path Design to assure high image quality
- The Flip-Up function can bring unobstructed vision and eye contact with your patients with a single adjustment
- The whole structure made of ultra-light alloy creates a cool metallic look, ensuring excellent structural strength and durability, while minimising the weight and the pressure on the nose when wearing

Model	Magnification	Working Distance	Pupillary Distance Adjustment	Depth Of Field	Field Of View	Weight
X3.5	3.5X	280-380mm	50-80mm	100mm	70-90mm	75g
X4.5	4.5X	360-460mm		100mm	50-80mm	80g
X5.5	5.5X	440-540mm		90mm	50-75mm	88g
X6.5	6.5X	500-600mm		80mm	45-70mm	87g

CarbonFore



**No more stress on the nose bridge
Compatible with Your Glasses**

**Unique Forehead Frame Design for
Stress-Free Comfort**



CarbonFore Keplerian Ergo Loupes

Model	Magnification	Working Distance	Pupillary Distance Adjustment	Depth Of Field	Field Of View	Weight
FE3.5	3.5X	280-380mm	50-80mm	100mm	70-90mm	79g
FE4.5	4.5X	360-460mm		100mm	50-80mm	81g
FE5.5	5.5X	440-540mm		90mm	50-75mm	87g
FE6.5	6.5X	500-600mm		80mm	45-70mm	85g



CarbonFore Keplerian Loupes

Model	Magnification	Working Distance	Depth Of Field	Field Of View	Weight
F4.0	4.0X	280-380mm	200mm	150-170mm	84g
F5.0	5.0X	360-460mm		130-150mm	86g
F6.0	6.0X	500-600mm		110-130mm	94g



CarbonFore Galilean Loupes

Model	Magnification	Working Distance	Pupillary Distance Adjustment	Depth Of Field	Field Of View	Weight
F2.5	2.5X	300-580mm	50-80mm	200mm	150-170mm	71g
F3.0	3.0X			200mm	130-150mm	77g
F3.5	3.5X			200mm	110-130mm	81g

FireFly Cordless



FireFly Cordless

Firefly provides stronger light intensity to enable work with higher magnifications.

Parameters

Intensity	55K LUX / 35K LUX		
Weight	27 g		
Run Time	2 hrs		
Charge Time	1.25hrs		
Batteries	3 pcs		
Colour Temperature	5,750K		
Yellow filter	External		
Colour	35K LUX	● Silver	
	55K LUX	● Blue	● Gold ● Dark grey



FlexiLight

Wired Headlamp



Bright & Natural LED Lighting

5000K color temperature for daylight-like illumination

Adjustable Lamp Head

Customisable angle for precise lighting

Lightweight & Portable

Compact design with neck-hanging power system

5-Level Brightness Control

Easy adjustment for different lighting needs

Long Battery Life

Up to 6 hours of continuous use

Quick Charging

Fully charged in approximately 4 hours

Durable & Reliable

Supports 500+ charge cycles

Parameters

Input Power: 90V - 250V AC, 50Hz - 60Hz

Colour Temperature: 5000K \pm 500K (daylight color)

Battery Life: Approximately 6 hours

Charging Time: Approximately 4 hours

TriLux Laser



- Triple Wavelength: Combines 450nm, 650nm, and 980nm wavelengths
- 7-inch OLED touch screen works with wet hands and medical gloves
- Ease of Operation: Handpiece features a power adjustment button
- Fiber Optic Tip Models: Available for various dental diode laser applications
- Built-in long-life lithium battery lasts for one month on a single charge



Ultracare Pro

Scaler & Air Polish Device

Four In One

- Plaque Control Sandblasting Treatment
- Comfortable and Painless Ultrasonic Periodontal Treatment
- Ultrasonic Root Canal Treatment
- Aluminium Oxide Sandblasting
- Automatic handle recognition
- Instant access precise control
- Smart temperature control for enhanced comfort

Chair side DUE Master



Two Handpieces

- Two Handpieces
- Cost-effective
- Simple installation without a separate external pipe, directly connected to the dental-chair's four-hole high-speed interface
- Patented sand-bin, constant sand production rate, meeting clinical requirements
- Easy One-click cleaning saves the time
- reduces maintenance
- Metal handpiece is durable and can be rotated 360 degrees. Easy to access to any part of the mouth
- Easy to disassemble
- Suitable for different dental chairs

MotoSync MiNi[®]

World smallest and lightest

- Smaller and Lighter
- Built-In Apex Locator
- Precision Path Technology (PPT)
- Torque Adjustment Technology (TAT): Experience real-time torque adjustment in response to varying canal resistances
- Advanced Anti-Vibration Technology
- 6:1 Contra-Angle Design
- TFT Full-Colour Display
- Torque from 0.4 to 5.0 N-cm and speed from 50 to 2500 rpm
- High-Capacity Battery: Equipped with a robust 2000 mAh battery

Brushless
Endo Motor



Built in Apex locator

- Precision Path Technology (PPT)
- Torque Adjustment Technology (TAT): Experience real-time torque adjustment in response to varying canal resistances
- Advanced Anti-Vibration Technology
- 6:1 Contra-Angle Design
- TFT Full-Colour Display
- Torque from 0.4 to 5.0 N·cm and speed from 50 to 2500 rpm
- High-Capacity Battery: Equipped with a robust 2500 mAh battery

Parameter

Screen	TFT Colour screen
Torque	0.4~5.0N.CM
Speed	50rpm~2500rpm
Battery capacity	2000mAh
Weight	150g



Brushless
Endo Motor

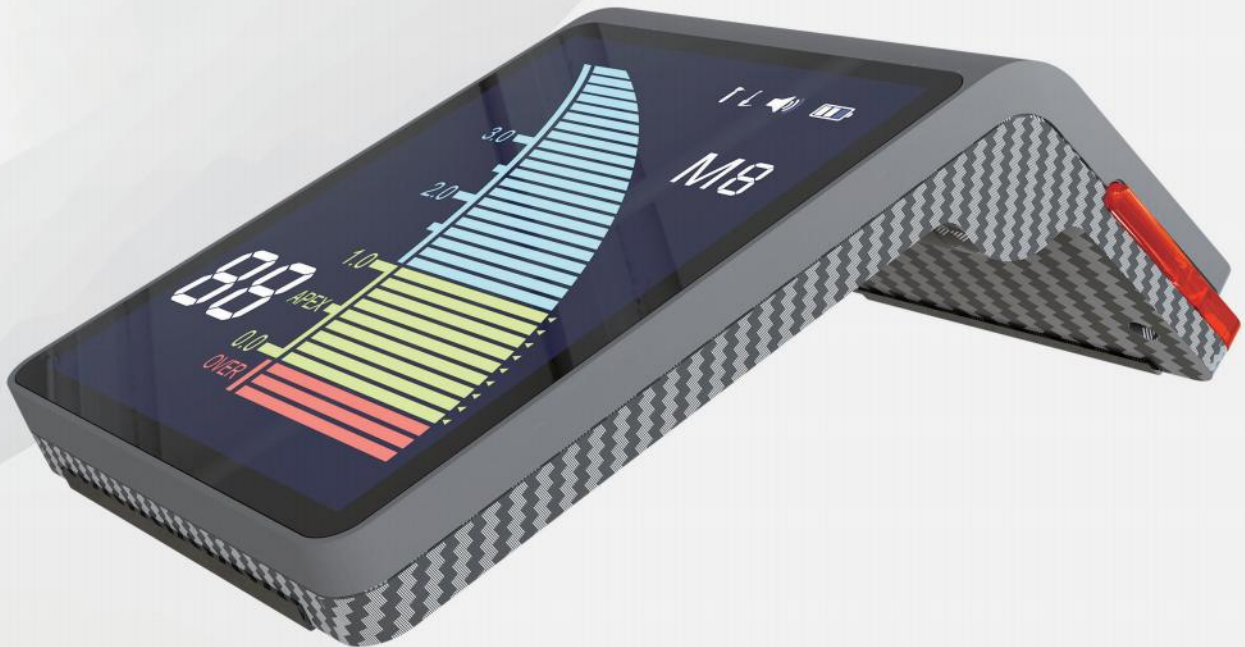
HeptaLux[®] Curing Light

- Clear OLED display
- 8 modes: Normal, High, Turbo, Ortho, Peri, Soft, Pulse, Check
- 360° rotatable head
- 10w LED, 3200 mw/cm² intensity
- 14.5° precise light angle
- Charging base with light meter -wireless charger



ApexSync Pro[®] Apex Locator

- Multi-frequency isolated network for apex locating technique, featuring a Self-calibration function when powered on to guarantee measuring accuracy
- Large Colourful LCD screen with touch buttons, displaying multi colour that clearly shows the moving track of the root canal file
- Equipped with a high-capacity 3.7V/200mAh rechargeable battery that can be repeatedly recharged for long life
- File clip, lip hook and measuring file can be autoclaved repeatedly, preventing cross infection
- Foldable design for easy adjustment of the visual angle



Scan Master[®] Intraoral Scanner

- 20 seconds full-arch scanning
- AI-powered enhancement
- Pristine accuracy
- True-to-life colour
- The gyroscope inside the scanner allows you to view scanned images from different angles by simply rotating the scanner, eliminating the need to touch the screen
- Future-proof ecosystem
- Cloud storage
- Online 3D viewer
- The tiny button carries significant responsibilities
- The button controls the entire digital workflow
- It prevents cross-contamination as you don't have to touch the screen or use a mouse
- Safety is always our top priority



Xpe Version[®] Sensors Dental Intraoral Sensors

APS CMOS Technology

- Xpedent Intra-oral Sensor family, based on advanced APS CMOS together with the leading technologies such as smart AED, direct deposited CSI scintillator and ergonomic design, brings optimal digital imaging to your daily practice
- APS CMOS technology
- Smart AED-Compatible for variety X-Ray sources
- Direct deposition CSI - Lower dose imaging
- USB 2.0 direct connection
- Slim, rounded corner and thumb position
- P68 - High reliability



Xpe Version[®] Sensors

Dental Intraoral Sensors

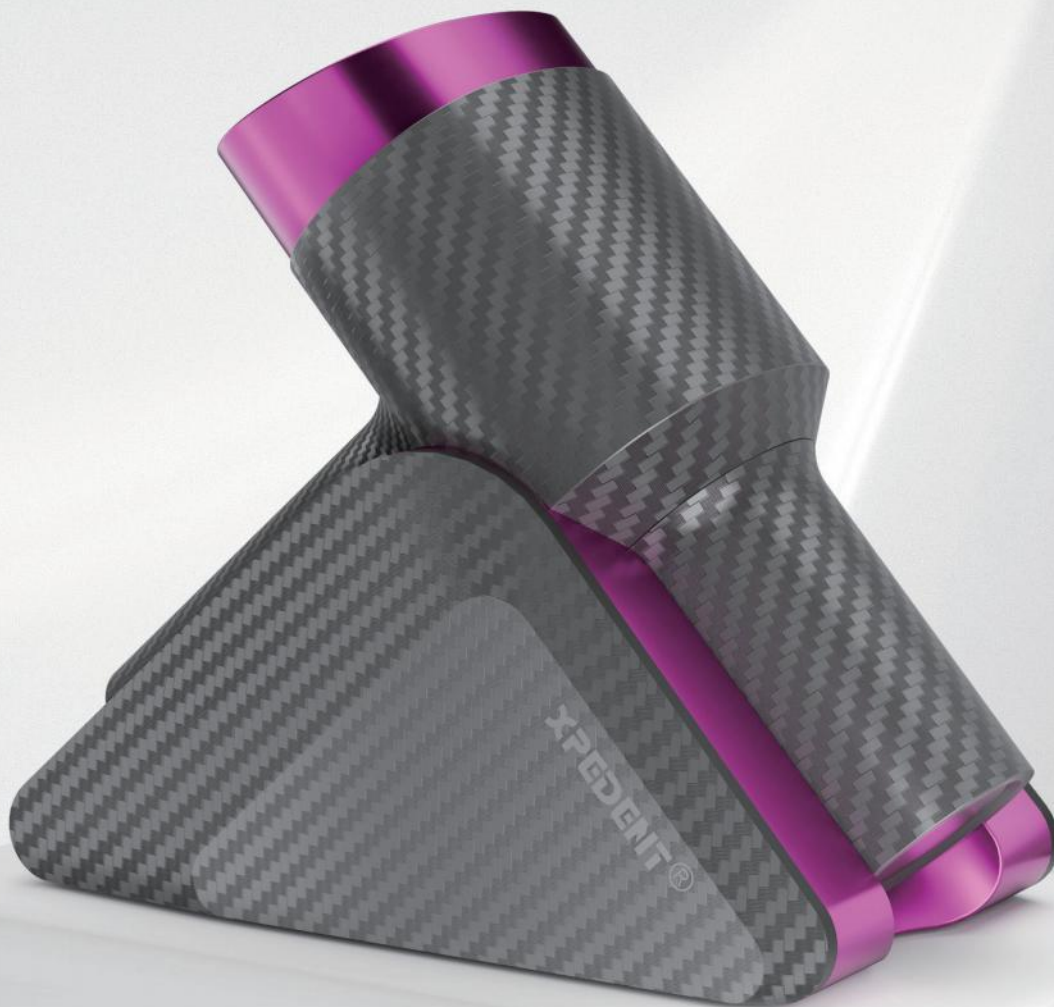
Photon Technology

- Grayscale: ≥ 16 bits (highest in the industry)
- Tested spatial resolution: 12-14 Lp/mm
- Connection: USB connection or Wireless
- Connection cable: 3m (extendable)
- Compatible with operating systems: Windows 7, 8, and 10
- Cutting-edge Technology and Rigorous Testing Ensure Unrivalled Durability
- Withstand over 500,000 exposures and 100,000 cable bending tests, ensuring reliable performance in various working conditions
- Shock-resistant and waterproof casing provides secure protection for the sensor

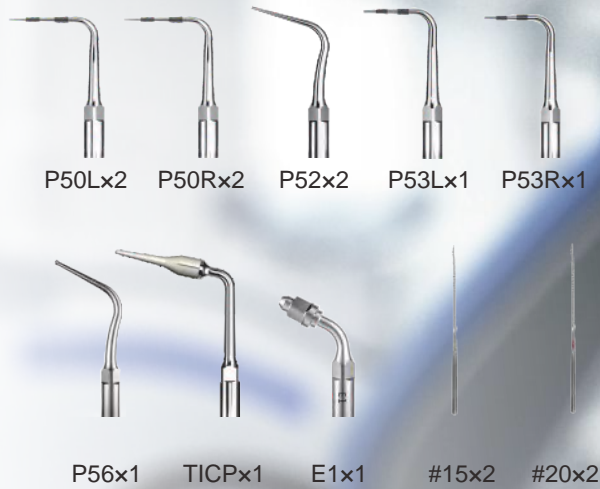


Evoray[®] Portable X-ray

- Unlike standard X-ray machines, the DC high-frequency portable X-ray machine operates without the unstable interference of external AC power, resulting in stable output rays and superior image quality
- Utilises a micro-focus tube with a focal size of 0.4mm, concentrating radiation and minimising scatter for clearer images
- Offer the flexibility of choosing from imaging methods, including soft film, sensors, and scanners
- Equipped with a high powered battery that ensure continuous shooting for up to 200 times when fully charged



Scaler & Air Polish Device



PX-A

Plaque control and sand blasting treatment

- Multi-stage air filtration prevents water from entering the sand tank
- Patented handpiece design, 360-degree unobstructed rotation
- The nozzle is progressively tapered and sandblasted more intensively

Comfortable ultrasonic periodontal treatment

- Patented handpiece design, does not get hot during extended use
- Additives may be used in built-in water supply
- Automatic tracing technology and intelligent chip identifies tips

Micro Etching Master[®] Dental Alumnia Sandblaster

- Very hard tungsten carbide steel nozzle gives longer life
- The rotatable nozzle can spray 360°
- Detachable, easy to clean and maintain
- The switch is comfortable to use, and the sand flow is accurate
- Accurate flow enables almost all sand to be used
- Four-hole standard interface, easy installation and operation, no need to take over the pipeline
- Sand blasting with water reduces dust pollution to protect the health of doctors and patients
- The only dual-purpose sandblasting machine, the unique sand design prevents clogging, giving greater efficiency
- Sodium bicarbonate and glycine dental floss powder, surface
- Coarsening aluminum oxide powder can be used



Erythritol

- Used with Air Polisher for the removal of plaque from teeth
- To be used for oral cleaning only. Please do not ingest or swallow

Glycine

- Used with Air Polisher for the removal of plaque from teeth
- To be used for oral cleaning only. Please do not ingest or swallow



- No water absorption, no blocking, high efficiency
- Perfect for working on the surface of tooth crown, inserts and orthodontic fasteners
- **27-micron** sand for Immediate denture Sealing after the tooth surface, such as polymer resin type restoration, dentin
- **50-micron** sand for ceramic and porcelain restoration, such as porcelain veneers or inlays
- **90-micron** sand for metal and zirconia restorations such as orthodontic brackets, implant bases, zirconia restorations



Ultrasonic Endodontic Expert

Ultrasonic Endodontic Scaler

Shel-P

- Features a clean, reliable, and sensitive touch screen with tempered glass material that is waterproof and durable
- Equipped with an LED handpiece that provides clear working vision
- Includes an inductive rotary water switch that is detachable and has an automatic washing function, making it easy to clean
- Utilises a sine wave drive to avoid instant stimulation, ensuring a comfortable and gentle experience
- Incorporates an intelligent negative feedback system for constant power output, achieving a continuous and stable treatment effect
- Offers two ways of water supply, making it easier than ever to change supply methods



Tips & Tip Wallet

DEMO1



DEMO1S



DEMO3



Xpedent Torque Wrenches for Sonic and Ultrasonic Tips

TW UNI P



Plastic Torque Wrench

Suitable for use with Xpedent e, n and s ultrasonic tips

TW SIR



Plastic Torque Wrench

Suitable for use with Xpedent sr tips

TW KAV



Xpedent Torque wrench for SONICFLEXPIEZOLUX & SONOsoft, SONICflex quick

TW KAV M



Xpedent Torque wrench for KAVOPiezOLED & PIEZOsoft

TW MEC M



Xpedent Torque wrench For all Mectron tips

TW AMD M



Xpedent Torque wrench For all Amdent tips

SIRONA® is a registered trade mark of Sirona Dental Systems GmbH

EMS® is a registered trade mark of Electro Medical Systems SA

SATELEC® is a registered trade mark of ACTEONGroup

Mectron® is a registered trade mark of Mectron s.p.a.

Amdent® is a registered trade mark of LMInstruments Oy

Kavo® is a registered trade mark of KAVODental Corporation

NSK® is a registered trade mark of Nakanishi INC. Corporation

Sonicflex®, Piezolux® & Sonosoft®, Piezoled® & PiezoSoft®, Sonicflex quick® are registered trade marks of the company KAVODENTALGMBH

X files



U files

UF-SET/32



UF-15/32



φ0.15mm
10pieces/box

UF-20/32



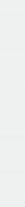
φ0.2mm
10pieces/box

UF-25/32



φ0.25mm
10pieces/box

UF-30/32



φ0.3mm
10pieces/box



Follow up



xpedent UK



Xpedent International



Xpedent



Xpedent

www.xpedent.com



Xpedent Head Office

Xpedent UK Ltd

88 Boundary Road,
Hove, East Sussex,
BN3 7GA
England 06128867



EU Office

Xpedent Austria GmbH

Millennium Park 9
6890 Lustenau
Austria



Manufacturer

Guilin Yikeshi Medical Instrument Co., Ltd

D08 Building, High Tech
Industrial Park, Chaoyang
Road Qixing District Guilin,
541004 China